

Grand Entrance

Create the right first impression, without compromising on quality

Nothing lasts longer than a first impression. Your entrance is that first impression - it needs to be both stylish and enduring.

The right matting solution combines a range of finishes and options to compliment your building entrance design, while being engineered with durability and performance in mind.

BIRRUS ULTRAMAT PERFORMANCE

Ultramat from Birrus has set the gold standard for matting systems and is trusted by architects across Australia.

Ultramat delivers a full range of design options with unrivalled performance in dirt and moisture retention, even in buildings with very high foot traffic.

BIRRUS ULTRAMAT DURABILITY

Our high-tech manufacturing process delivers a 15 micron colour coating on anodised matting, ensuring a finish that lasts, even under heavy and prolonged use.

Based on the tried and trusted Ultramat design, these new options are available in both the Open and Closed construction forms that have proven popular with architects for years.

BIRRUS ULTRAMAT STYLE

Now, in addition to our standard design options, we offer a new range of Anodised Ultramat systems to further enhance your entranceway design.

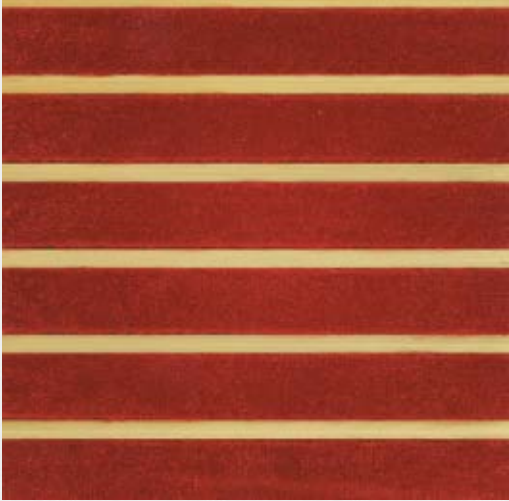
Our Anodised range offer a quality finish to your building entrance to compliment the visual impact that your design creates.

A full range of carpet colours and options are available and can be reviewed on our website. All Birrus matting systems are individually customised to your site specifications to deliver a tailored solution to meet your needs.



New from Birrus

ANODISED ULTRAMAT SYSTEMS



BIRRUS ULTRAMAT ANODISED
Precious Gold



BIRRUS ULTRAMAT ANODISED
Antique Bronze



BIRRUS ULTRAMAT ANODISED
Midnight Black

Birrus Ultramat

Birrus Ultramat is our Flagship product and is constructed from alternate treads of aluminium and carpet running across the doorway. It is ideal for interior or exterior applications with the appropriate type of textured insert that is selected.

The carpet treads are securely held within extruded aluminium retaining sections which are lightly furrowed on the exposed surface to produce a non-skid surface.

In addition to the Closed Construction option, an Open Construction Slimline aluminium extrusion system, linked with a perforated joining strip to allow for drainage, is also available.

Request a Sample

To request a free sample of the new Anodised Ultramat, for consideration on your next project, visit www.birrusmatting.com.au or call 1300 369 858

Ontera Cut Pile TECHNICAL SPECIFICATION

- Construction:** Fusion bonded cut pile
- Face Yarn:** 100% Nylon 6,6
- Total Pile Mass:** 814g/m² (24oz)
- Dye Method:** Dye injection / stock dyed
- Guage:** 33.7 per 10cm (1/9th guage)
- Rows:** 32.5 per 10cm
- Finish Pile Height:** 5.1mm average
- Total Thickness:** 7.3mm average
- Backing:** Polymer matrix with fibreglass reinforced Inertial Backing System (IBS)
- Module Size:** 457.2mm (18") Square
- Box Quantity:** 4.18m² (20 Tiles per Box)
- Total Weight:** 5,039g/m²

Ontera Cut Pile PERFORMANCE SPECIFICATION

- Flammability:** Radiant Panel Test ISO9239-1
CRF = 7.2kW/m²
Smoke = 429%.minutes
- Dimension Stability:** International Aachner Test LESS than 0.2% at both Primary and Secondary backing levels
- Electrostatic Propensity:** Less than 3.5kv at 210C and 20% RH
- Bulk Resistance:** 5x10⁵ to 2x10¹⁰ OHMS (IBM Method)
- Edge Integrity:** No unravelling at edge of module
- Colourfastness:** Meets or exceeds the relevant Australian standard in the following tests;
To Light Xenon Arc Test: (5-6)
To Shampoo AS2111.19.2 (3-4)
To Rubbing AS2111.19.1 (4) (wet & dry)
- Soil Protection:** Soil and stain protection applied
- Castor Chair Test:** BS.EN985 Pass = A (2.9)

Birrus Ultramat PROFILES



Closed Construction 10mm & 16mm



Open Construction Slimline 10mm

About Birrus

For over 60 years, Birrus has been trusted by Architects and Builders in Australia for products that are both beautiful and durable. We have maintained our market leadership by moving with the times, using the latest materials and design innovations to remain your first choice for matting systems. All of our matting systems are manufactured in Australia using high-grade materials and are backed by a 10 year warranty. As a company, Birrus has also implemented a number of measures to minimise our carbon footprint, initiated recycling procedures and gained environmental accreditation.

